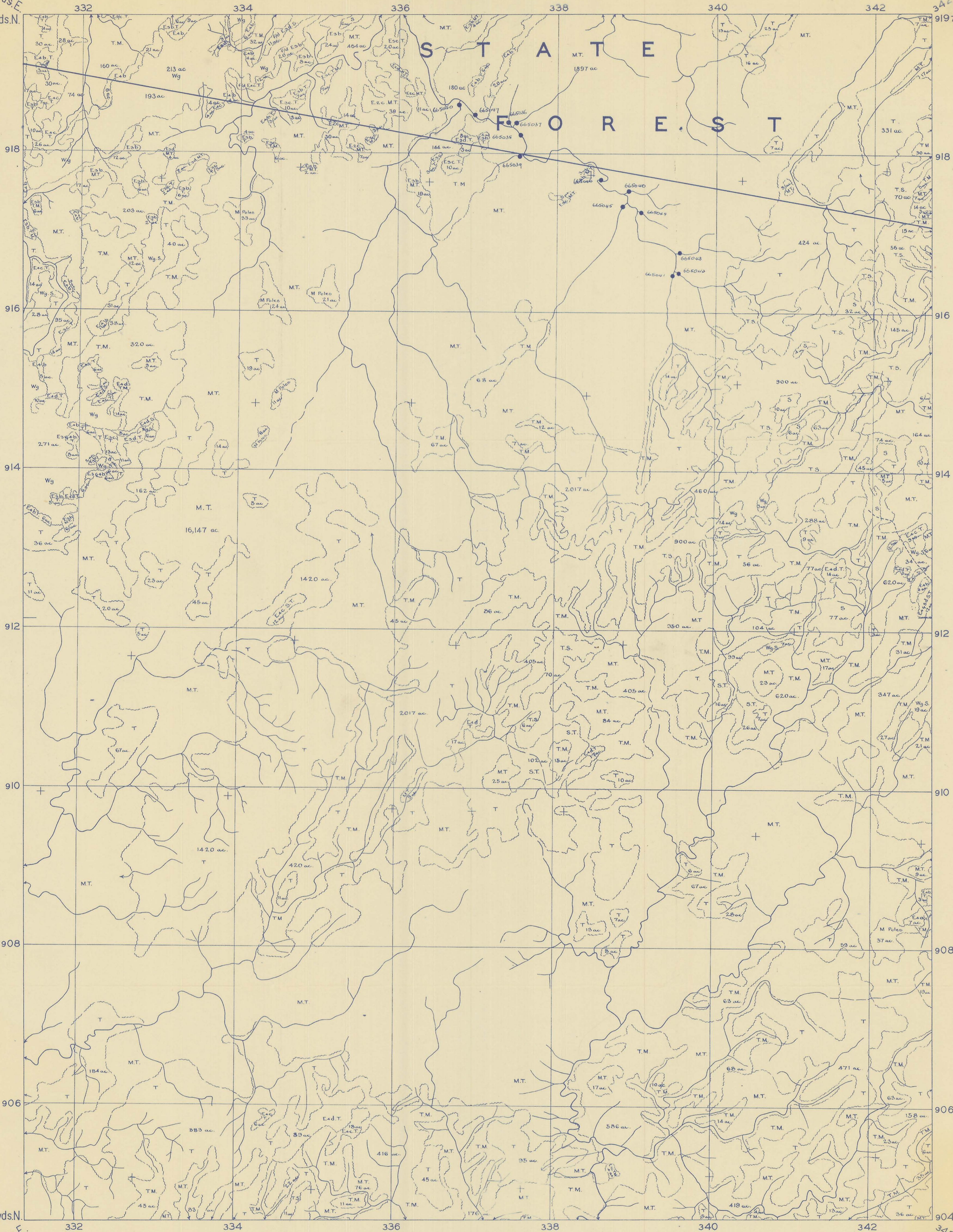


# MAGNET

RF: 1/23,760

331249yds.E.  
919705yds.N.

342707yds.E.  
919787yds.N.



## KEY TO PHOTOGRAPHS

47609	+	Run 1	+	47862
23	+	Run 2	+	30
55	+	Run 3	+	49
97	+	Run 4	+	104
40980	+	Run 4A	+	48998

## KEY TO ADJOINING SHEETS

### TROWUTTA

1 2 3 4

5 6 7 8

9 10 11 12

13 14 15 16

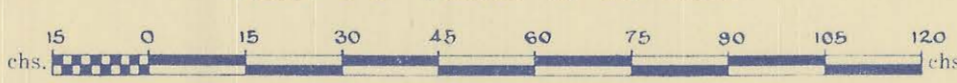
BALFOUR VALENTINES PEAK

CORINNA

## OTHER FOREST TYPES

- M — Myrtle
- T — Secondary species
- V — Cultivation and pasture
- Vz — Orchard
- S — Rough grazing
- K — Bracken
- W — Wasteland
- Wg — Button grass, or healthy plain
- Wm — Mountain moor
- Wr — Bare ground, or rock
- I d — Fire damaged
- O m — Over mature
- C o — Cut over

Scale: 30 Chains to an Inch.



Form Line Interval feet

## EUCALYPT TYPES

- E — Eucalypt Forest
- E1 — Mature Eucalypt Forest average height of dominants above 180 ft.
- E2 — " " " " from 135-180 ft.
- E3 — " " " " from 90-135 ft.
- E4 — " " " " from 50-90 ft.
- E5 — " " " " less than 50 ft.
- ER — Eucalypt Regrowth
- ERg — Eucalypt Seedling and Sapling Regrowth
- ERP — Eucalypt Pole Regrowth

## DENSITY CLASSES (Mature Eucalypts only)

- CROWN COVER
- a — 70-100 per cent eucalypt crown cover
- b — 40-70 " " "
- c — 20-40 " " "
- d — 5-20 " " "
- f — less than 5 " " "

## CONVENTIONAL SIGNS

- All weather roads
- Summer roads
- Tracks
- Trams
- Private property boundaries
- State forest boundaries
- Sawmills
- Old mill sites
- Fire lookout stations
- Forestry Comm. trig. stations
- Other trig. stations

DATE OF PHOTOGRAPHY JANUARY 1953

DATE OF PRODUCTION MAY 1956

5 cm

Compiled from Air Photographs  
by  
Mapping Branch  
Forestry Commission  
Tasmania